



water and sanitation  
transform lives

---

# SABESP DAY

New York, May 9, 2022  
Ben Braga - CEO



| Secretariat for Infrastructure and Environment



# Sabesp in numbers



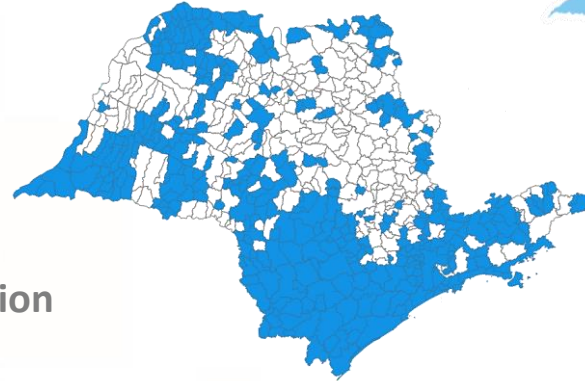
## Third largest

In the world in terms of gross revenue (2019)

# 375

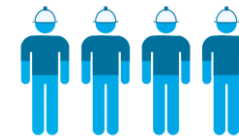
### Municipalities

~ 300 full access to safe drinking water and sanitation



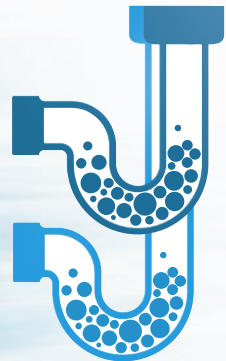
## 28 million consumers

~ 70% of the State's urban population



## employees

# 12,515



# 100%

## Water supply

# 79%

## Households connected to sewage treatment

# 92%

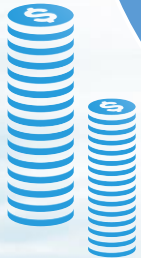
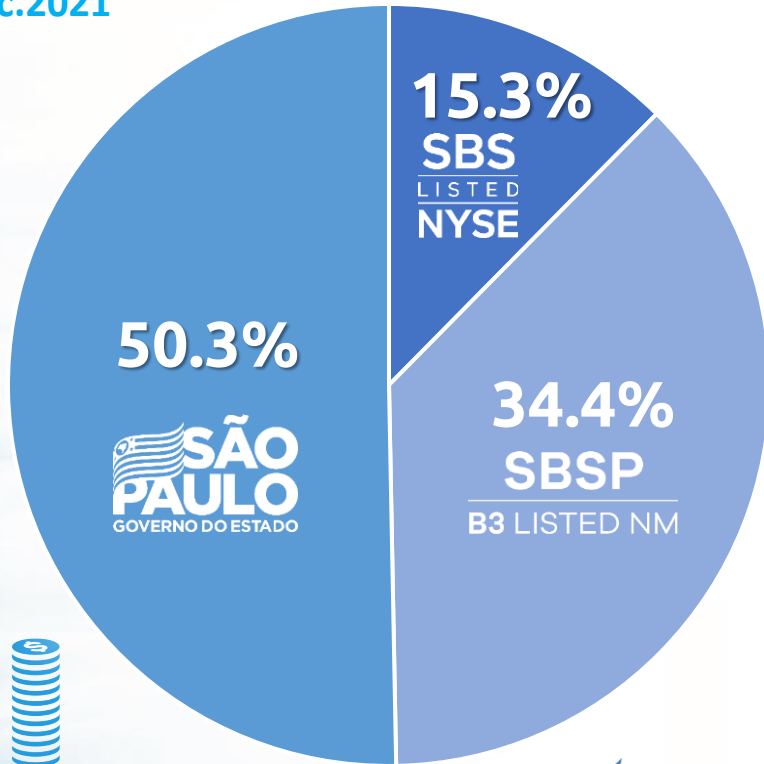
## Sewage network coverage



# Corporate Governance and Investments



Dec.2021



**R\$32.6 billion**  
Market Cap



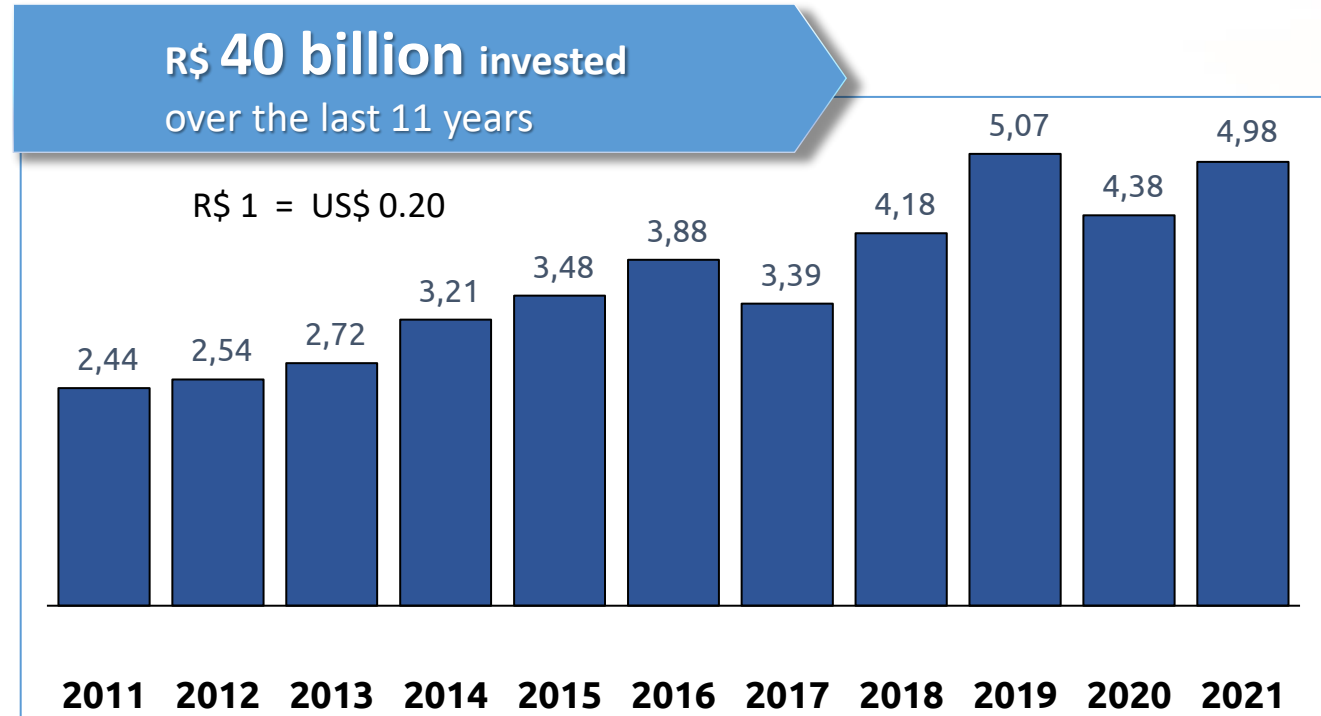
**R\$ 19.5 billion**  
Net revenue

**Dividend Policy:**  
25% - Pay Out: **27.9%**

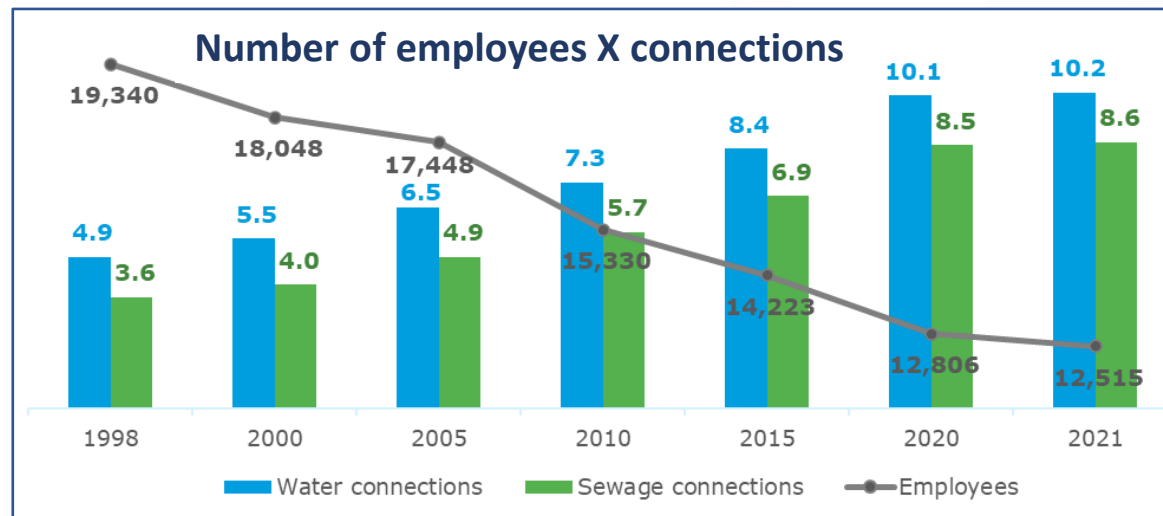
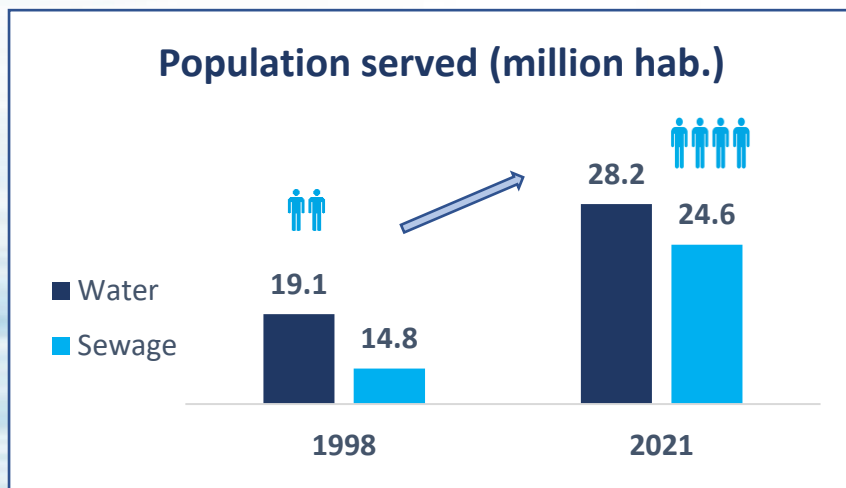
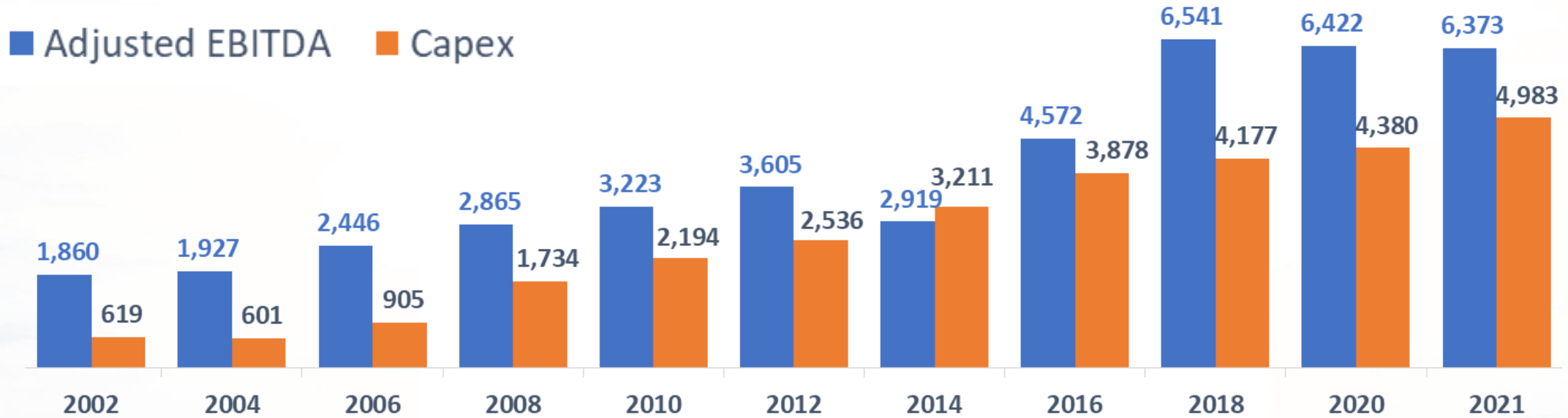


**R\$ 5 billion** In 2021 - water security and expansion of the sewage collection structure

**30%** of total annual investments in sanitation in Brazil



# Corporate Governance and Investments



# New regulatory framework



## Federal Law 14.026/2020

- ❑ Public bidding process allowing the participation of private companies
- ❑ New regulatory guidelines by the federal agency (ANA)
- ❑ Better business environment - more competition among players
- ❑ Bidding based on regional units to allow cross-subsidies



## Universalization Goals – 2033

- 99% of population with access to potable water
- 90% of the population with sanitation services (sewage collection and treatment)

## SBS adaptation to the new framework:



### COMPLIANCE WITH NEW GOALS

#### 367 Contracts Signed

- Representing **99.7%** of total revenue
- **10** largest contracts have an average term of 25 years

### PROOF OF ECONOMIC-FINANCIAL CAPACITY

Legal and Regulatory  
security



### WHOLESALE DELIQUENCY SOLVED



+ **2.6 million NEW CLIENTS**

Guarulhos, Santo André and Mauá  
End of debt of **R\$9.7 billion**



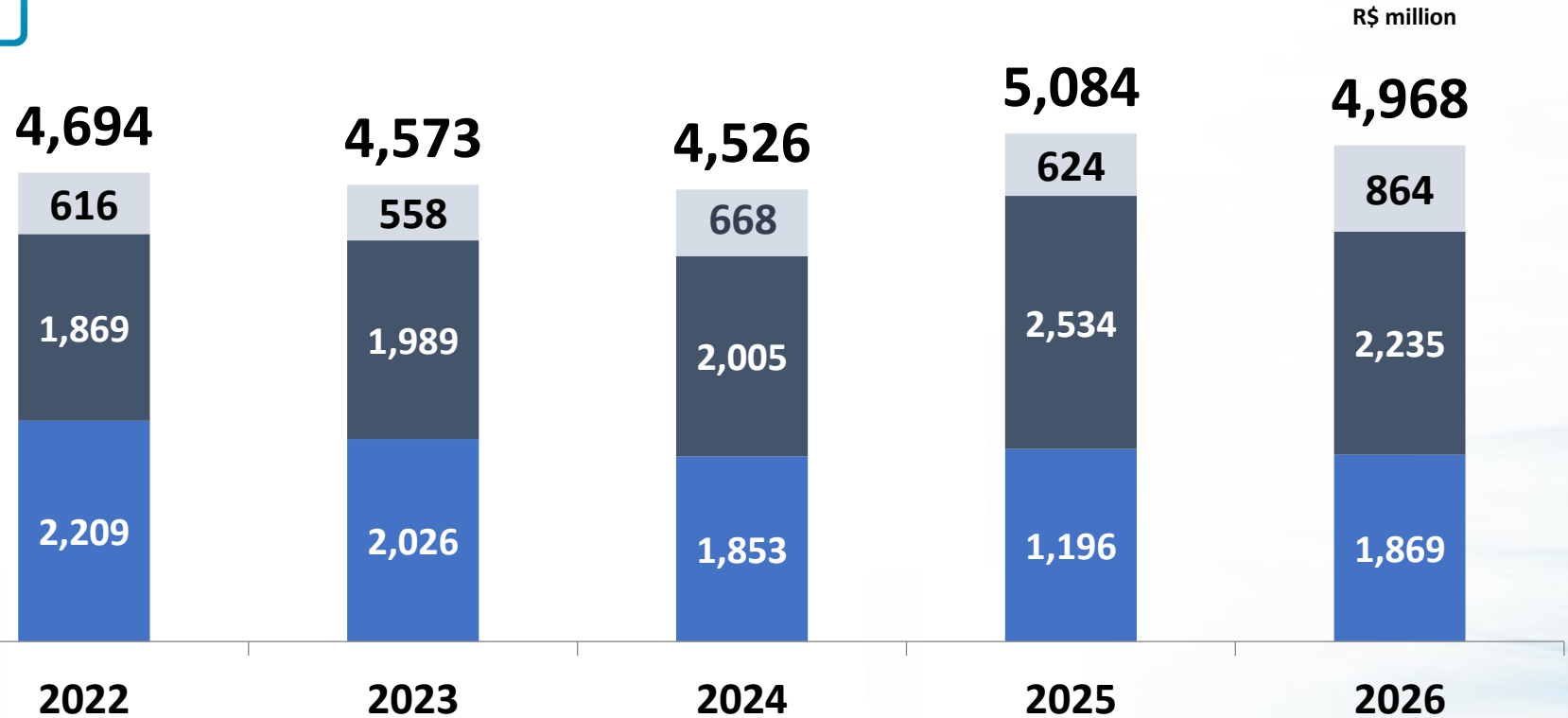
# CAPEX 2022 - 2026



**R\$ 24 billion**  
R\$ 10 billion  
in water supply and  
R\$ 14 billion  
in sewage collection  
and treatment



PROJECTIONS  
2022-2026



- 💧 1 million new water connections
- 💧 1.2 million new sewage connections
- 💧 Sewage collection from 92% (2021) to 95%
- 💧 Treatment from 79% (2021) to 90%

■ Water   ■ Sewage collection   ■ Sewage treatment



# Towards a more sustainable future - ESG



**BIOGAS FROM THE SEWAGE TREATMENT PROCESS IN THE MUNICIPALITE OF FRANCA - SP**



**FERTILIZER FROM SEWAGE SLUDGE (Sabesp/Unesp)**



**AQUAPOLO – WATER REUSE PLANT**



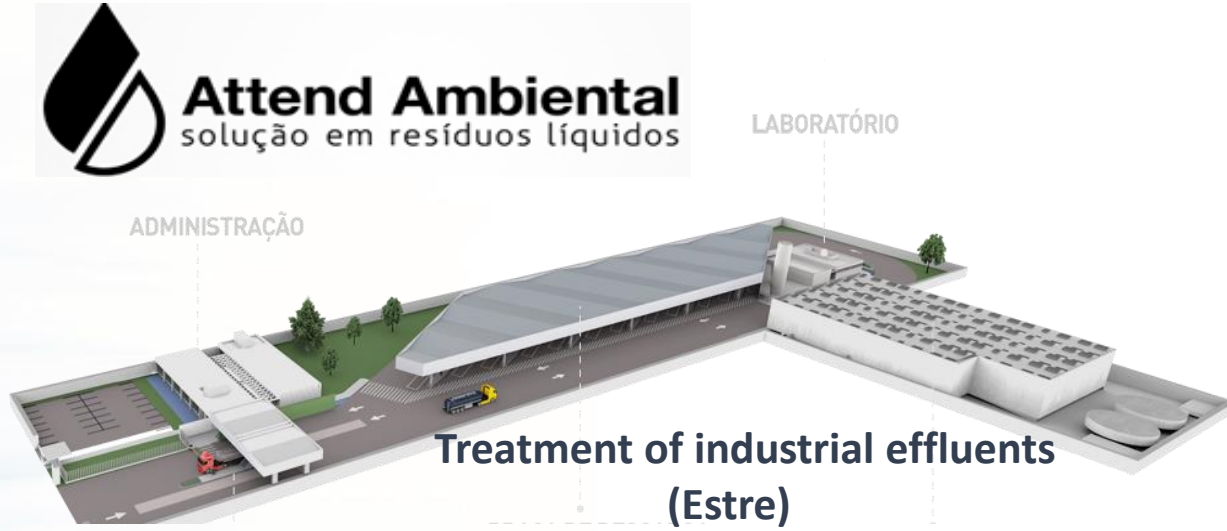
**GS Inima Industrial | sabesp**



**DIVERSIFICATION OF ENERGY SOURCES - PHOTOVOLTAIC POWER IN SEWAGE PLANTS**  
**Sabesp, GS Inima Brasil and ECS Operações**



# Partnerships with the private sector



# Water security – adaptation to the climate change



## SÃO LOURENÇO INTERBASIN TRANSFER

82 km from the intake, adding up to 6.4 m<sup>3</sup>/s to the SPMR West Region - 2 million people served. Investment R\$ 2.2 billion



## JAGUARI – ATIBAINHA INTERBASIN TRANSFER

13.2 km (6.4 km tunnel) - Transf. of up to 8.5 m<sup>3</sup>/s. From Jaguari dam, Paraíba do Sul basin to Atibainha dam (Cantareira system). Investment R\$ 550 million



# Sewage system expansion in SPMR



PROJETO TIETÊ

## TIETÊ PROJECT (1991 - 2021)

- US\$ 3.3 billion invested
- Sewage collection from 70% to 90%
- Sewage treatment from 24% to 85%
- 



# Pinheiros River basin | Challenge



Secretariat for Infrastructure and Environment

16 contracts  
+ 533,000 residences with sewage treatment  
+ 1.6 million people (2019 - 2022)



3.3 million people



+ 2,800 L/s  
of sewage treatment

BOD  $\leq$  30 mg/L at mouth  
of the tributaries

DO  $\geq$  2 mg/L along  
Pinheiros river

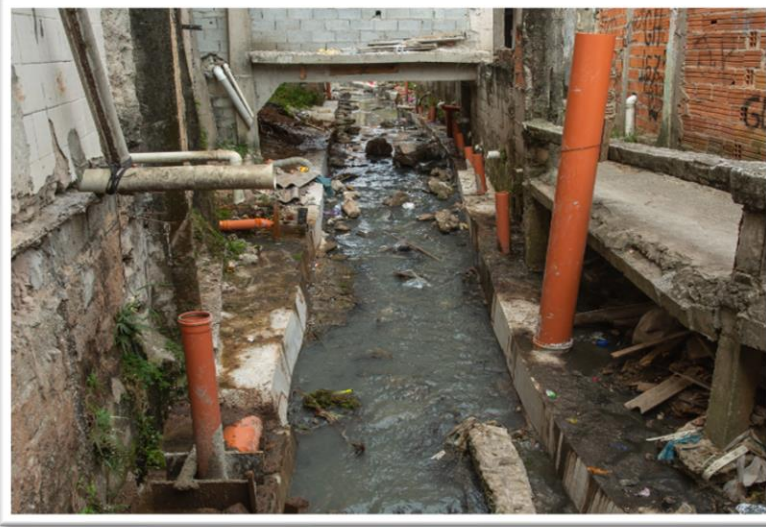
Final result – 94% of sewage collected and sent to Barueri STP

# Sanitation



Secretariat for Infrastructure and Environment

Swage connection mains being installed in informal settlements in the Pinheiros River basin, in Sao Paulo Metropolitan Region



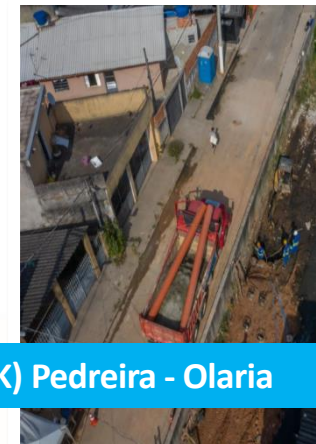
# Pedreira / Olaria creek (tributaries of Pinheiros River)



INTERCONNECTION 9 - Rua Valência de Alcântara



MAIN SEWER COLLECTOR (TRUNK) Pedreira - Olaria



Rua João de Araujo – NATM



Rua Dilermando Reis – NATM



Rua Pedro Fernandes de Aragão

# Pinheiros River tributary | Ponte Baixa Stream



Feb - 2019



Feb - 2022



# Pinheiros River tributary | Ponte Baixa Stream

---



# Pinheiros River tributary | Jaguaré Stream



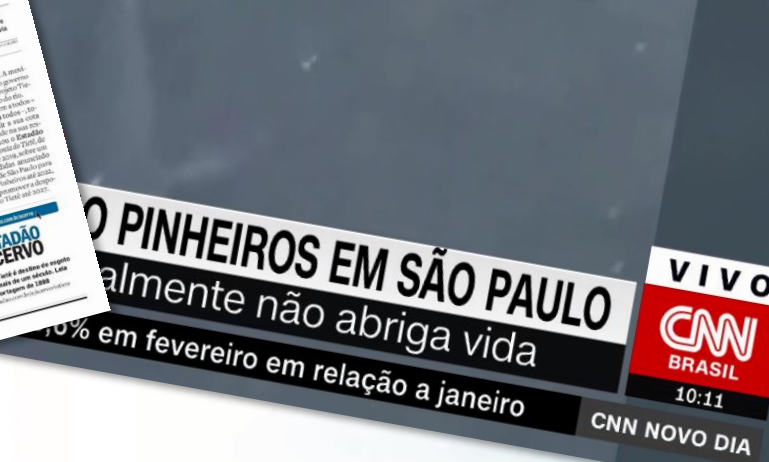
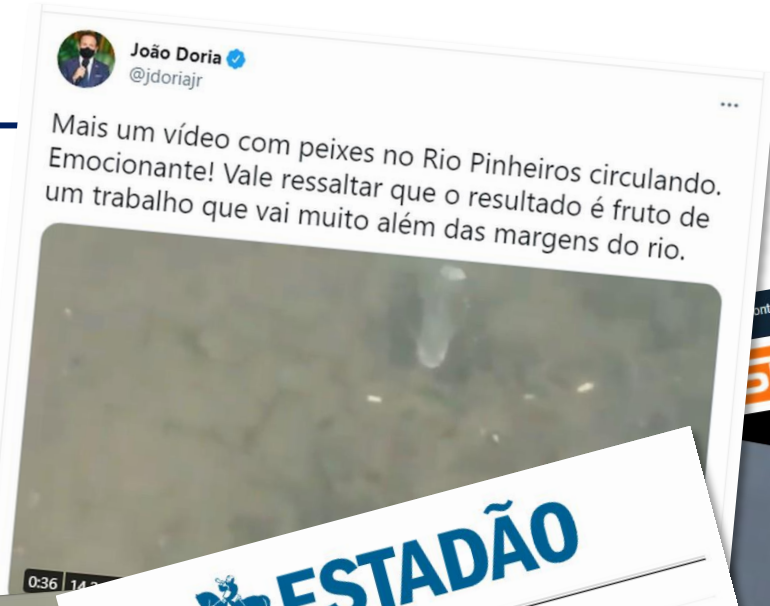
Secretariat for Infrastructure and Environment



# Initiatives with the communities



# 2022 | Results



# Nova Guarapiranga – new challenge



Secretariat for Infrastructure and Environment



# Thank you!

Ben Braga - CEO



| Secretariat for Infrastructure and Environment

